



Diving Beetle

These sleek, shiny beetles look like they're built for speed! They are generally called *dytiscids* (pronounced die-tih-sids)

	▼
Pollution tolerance	Very sensitive Sensitive Tolerant Very tolerant
Size	Up to 40 mm long

What they look like

Diving Beetles are smooth, oval and streamlined with hairy, paddle-shaped hind legs. There is a cavity under their wings that holds an air supply, so they can remain under water for long periods.

Where they live

Both the adult and the larval forms live in streams and ponds. They hide among reeds in swiftly flowing water. Adults of most species are strong fliers.

What they eat

Diving Beetles have biting mouthparts and eat other aquatic organisms or animals that fall into the ponds, dead or alive. They can eat snails and fish much larger than themselves.

Pollution tolerance

Very tolerant, rating 2

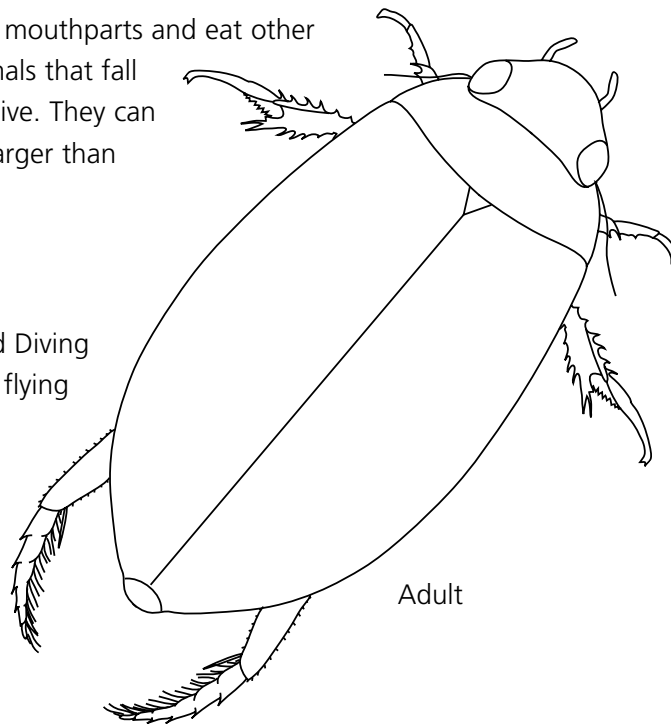
If living conditions get bad Diving Beetles leave the pond by flying to another.

What's interesting about the Diving Beetle?

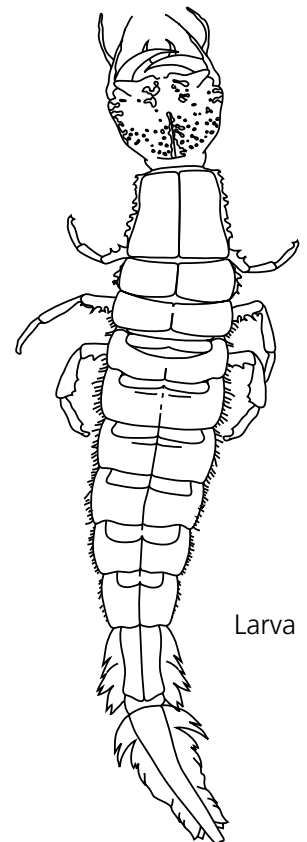
- They store air under their wings so that they can breathe under water.
- Many species fly at dusk (*crepuscular* – pronounced kre-puss-cue-lah) and are attracted to lights.

Where they fit in

Phylum Arthropoda > **Class** Insecta > **Order** Coleoptera > **Family** Dytiscidae



Adult



Larva