

Water Mite

These bugs are quite tiny, hence the “mite” in their name.

| | | | | |
|----------------------------|-----------------------------|------------------|----------|---------------|
| ▼ | | | | |
| Pollution tolerance | Very sensitive | Sensitive | Tolerant | Very tolerant |
| Size | Very small at 1 - 5 mm long | | | |

What they look like

Water Mites look like fat little spiders. They have a flat, round body with four hairy pairs of legs for swimming. The moveable head is attached to the body by a hinge.

Where they live

Water Mites swim in slow-flowing and shallow water among plants. They live in all freshwater environments, but are more abundant in species and number in slow-moving waters. They sometimes attach themselves to other aquatic animals.

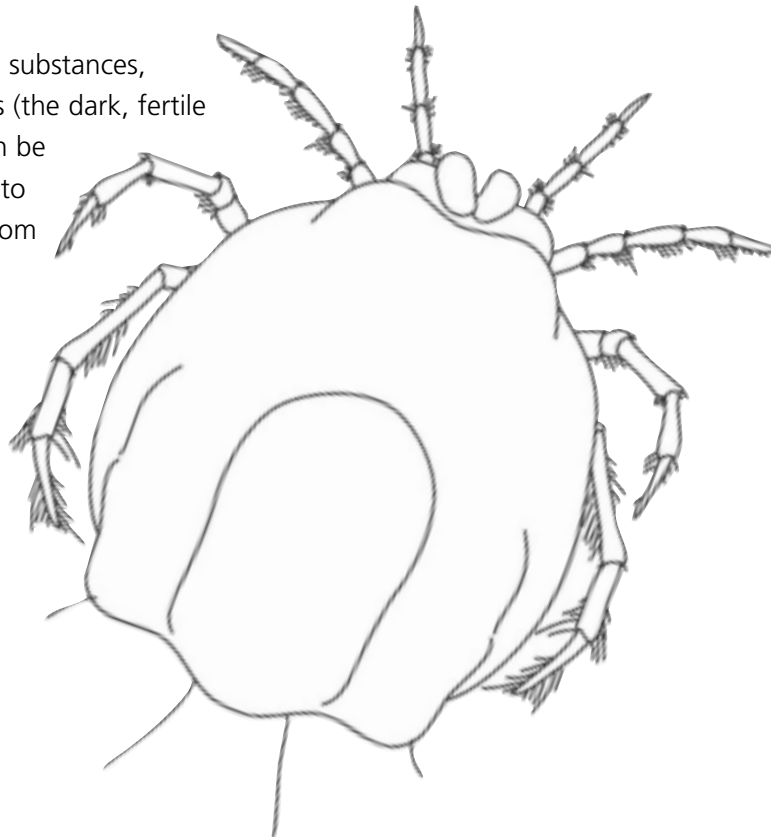
What they eat

Water Mites eat plant or animal substances, decaying organisms, and humus (the dark, fertile matter in soils). Some adults can be parasitic and attach themselves to other aquatic animals to feed from them.

Pollution tolerance

Sensitive, rating 6

Water Mites are sensitive to changes in their environment.



What’s interesting about Water Mites?

- They are a diverse group, but all have simple, rounded bodies with eight legs.
- Some are hard-bodied while others are soft-bodied.

Where they fit in

Phylum Chelicerata > **Class** Arachnida > **Order** Acarina