



Fly Larva and Pupa

The Fly Larva, generally known as a maggot, is the young form of flies, which belongs to the order Diptera, meaning two wings (Di - two, and Ptera - wings). Most insects have four wings, but flies have only two. The plural of larva is larvae. The pupa is like a teenage larva, before turning into a fly with wings.

What they look like

There are many types of Fly Larvae (plural of larva), but they are all generally grub- or worm-like. Some common groups include:

Black Fly larvae, which are dumb-bell shaped and soft. They like to attach themselves to rocks and wood.

Crane Fly larvae, which are large and fleshy with very short "tentacles" for breathing.

Where they live

Fly Larvae are found in streams and ponds, in water in the holes of tree trunks - anywhere water collects. The larvae of one species of fly lives in pools of crude oil.

What they eat

Some Fly Larvae feed on decaying matter and play a key role in recycling nutrients. Many species are herbivores (herb-ee-vorz) and a few are carnivores (car-nee-vorz). The Black Fly larva filter-feeds using two sets of filaments (thread-like structures) on its head that trail in the water.

Pollution tolerance Tolerant, rating 3

The Fly Larva can tolerate organic pollution as they feed on organic particles. They can live in water with low levels of dissolved oxygen as they often come to the surface to breathe.

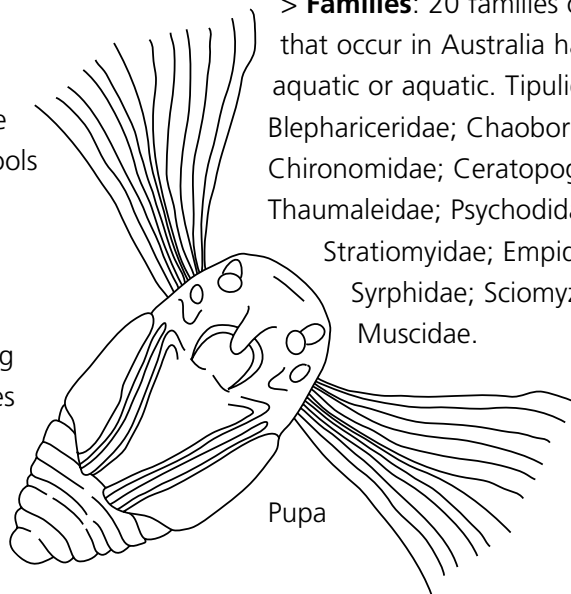
	▼
Pollution tolerance	Very sensitive Sensitive Tolerant Very tolerant
Size	Up to 50 mm long

What's interesting about Fly larvae?

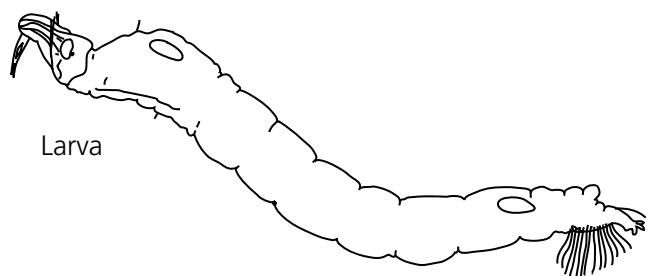
- *Blackfly* larvae anchor their bottoms to rocks in fast flowing streams and capture plankton through feathery filters that sway in the current.
- Fly larvae experience a complete metamorphosis (change or form through their life cycle) that includes eggs, larvae, pupae and adults.
- Many flies have a pupa enclosed in a puparium, the dried skin of the maggot that surrounds the pupa, similar to the way a cocoon surrounds a moth pupa.

Where they fit in

Phylum Arthropoda > **Class** Insecta > **Order** Diptera
 > **Families:** 20 families of the ninety-eight families that occur in Australia have larvae that are semi-aquatic or aquatic. Tipulidae; Tanyderidae; Blephariceridae; Chaoboridae; Dixidae; Culicidae; Chironomidae; Ceratopogonidae; Simuliidae; Thaumaleidae; Psychodidae; Athericidae; Tabanidae; Stratiomyidae; Empididae; Dolichopodidae; Syrphidae; Sciomyzidae; Ephydriidae; Muscidae.



Pupa



Larva