



Water Scorpion / Needle Bug

Some Water Scorpion species look like land scorpions. Also known as toe-biters, they are often seen beneath the water surface or on aquatic vegetation.

What they look like

Water Scorpions are large, predatory water bugs with grasping, pincer-like forelegs for seizing their prey. They have a short or long breathing tubes at the end of their abdomens. There are two commonly found water scorpions - one stout and leaf-like, and the other thin and stick-like (Needle Bug).

Where they live

Water Scorpions mostly live among water weeds or in the mud of ponds, lakes and streams but a few are found under rocks in flowing water.

What they eat

Water Scorpions are *carnivores* (car-nee-vorz), eating pond animals. They capture their prey with their front legs and suck out its body fluids.

Pollution tolerance

Tolerant, rating 3

Water Scorpions can tolerate low levels of dissolved oxygen, by coming to the surface to breathe or by using their long breathing tubes.

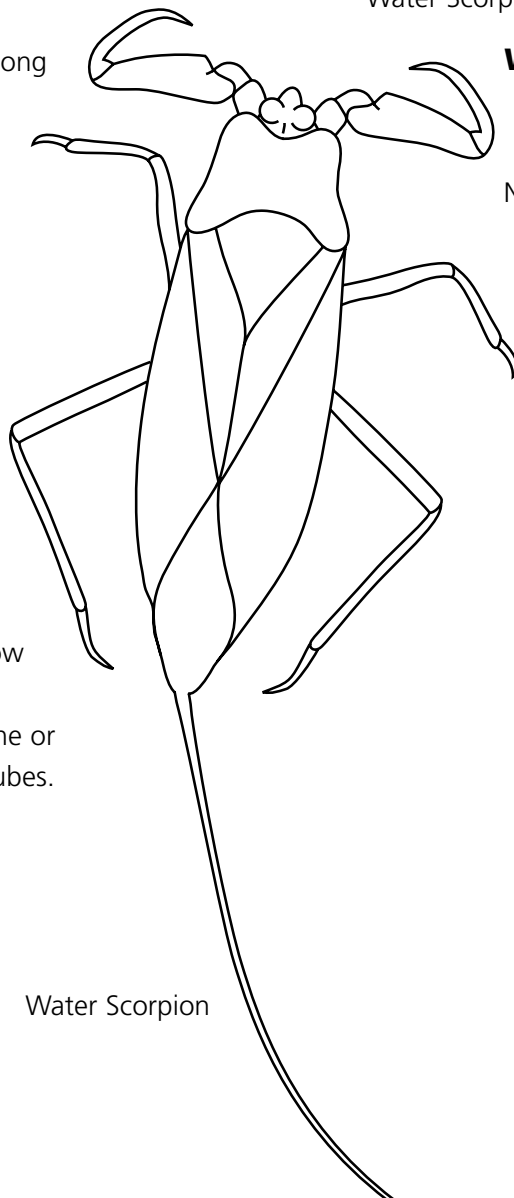
	▼
Pollution tolerance	Very sensitive Sensitive Tolerant Very tolerant
Size	Up to 50 mm long

What's interesting about the Water Scorpion?

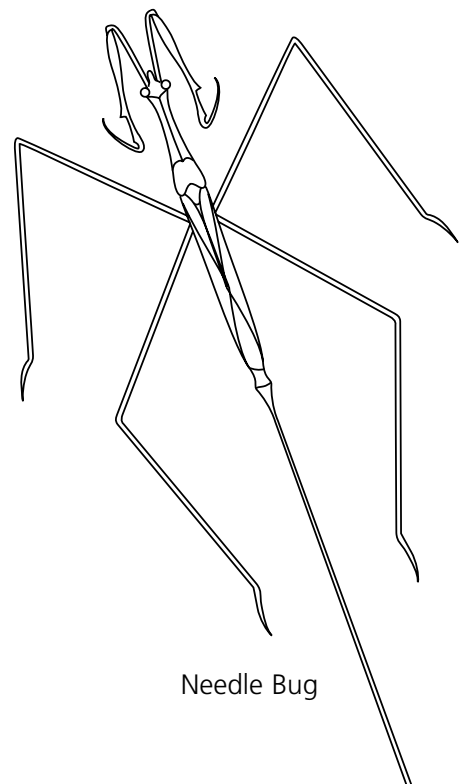
- It uses its siphon in a "snorkel fashion" thrusting it up through the surface film on the water to the air above.
- Their legs are not much use in swimming, so most water scorpions spend life near the shoreline.
- You need to handle them carefully, as the bite of a Water Scorpion can be painful!

Where they fit in

Phylum Arthropoda > **Class** Insecta
> **Order** Hemiptera > **Family** Nepidae



Water Scorpion



Needle Bug