



Waterboatman

These bugs often look like a beetle with oars! They are similar to Backswimmers, but they swim with their wings upward.

What they look like

Waterboatmen have unique legs that are easy to spot. Being active swimmers, their middle and hind legs have a fringe of swimming hairs and the front legs are short and scoop-like. They have a wide and rounded head with prominent eyes and short antennae. The *rostrum* (beak-like mouth part) is most often short, and some species may look a little beetle-like if the structure of the legs is ignored.

Where they live

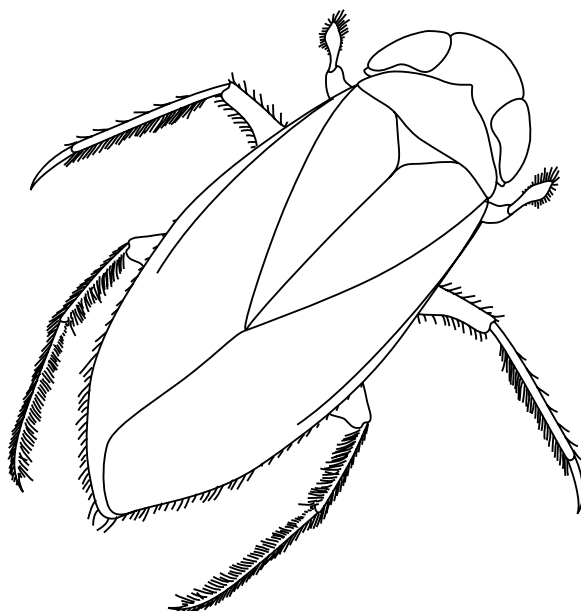
Waterboatmen live in still and slow-flowing ponds amongst the vegetation.

What they eat

Waterboatmen feed mainly on insect larvae in the bottom ooze (or sediment). They are known to feed on a combination of dead plant and animal matter (*detritus* – det-try-tuss) and mosquito larvae.

Pollution tolerance Very tolerant, rating 2

If the conditions get really bad, Waterboatmen can leave the pond easily by flying to another.



	▼
Pollution tolerance	Very sensitive Sensitive Tolerant Very tolerant
Size	From 1.5 to 15 mm long

What's interesting about Waterboatmen?

- They like to cling to objects in the water, including fish.
- Female Waterboatmen lay their eggs on hard surfaces. Their eggs have even been found on the shells of crayfish (brave bugs!).
- The nymphs look similar to the adults, but lack wings, and moult five times.

Where they fit in

Phylum Arthropoda > **Class** Insecta > **Order** Hemiptera > **Family** Corixidae

